



2018 CHILD ACTOR RATES

	January 1 - February 28, 2018			March 1 - May 31, 2018 and August 1 - December 31, 2018			June 1 - July 31, 2018		
	Minimum 31 Days		Short Term	Minimum 31 Days		Short Term	Minimum 31 Days		Short Term
Apartment Size	Daily	Monthly	+15.5% tax	Daily	Monthly	+15.5% tax	Daily	Monthly	+15.5% tax
Studio	\$95	\$2,945	\$120	\$91	\$2,821	\$116.00	\$105	\$3,255	\$130
One Bedroom	\$119	\$3,689	\$144	\$115	\$3,565	\$140.00	\$135	\$4,185	\$160
Two Bedroom	\$165	\$5,115	\$190	\$151	\$4,681	\$176.00	\$179	\$5,549	\$204



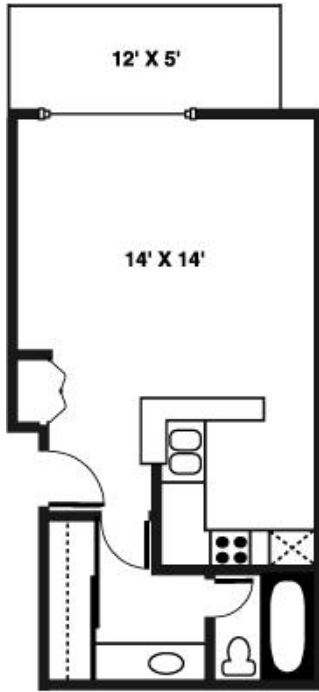
SIGNATURE APARTMENT INCLUDES:

- **Standard Pre Move-In Hookups:** Utilities, Cable, Local Telephone Service, and WIFI
- **Complete Kitchen Package:** Microwave Oven, Knife Block, Pots, Pans, Coffee Maker, Toaster and Place Settings
- **Living Room:** Sofa, Coffee and End Tables, Lamps, Cordless Telephone, 27" TV, and DVD
- **Relaxing Bedrooms:** Signature Bedding, Telephone, Hair Dryer, Steam Iron and Board, Clock Radio
- **Additional Features:** Weekly Housekeeping, Patio Furniture, Vacuum Cleaner, Luxurious Bath Towels, Cleaning Kit and our "Signature Artwork".

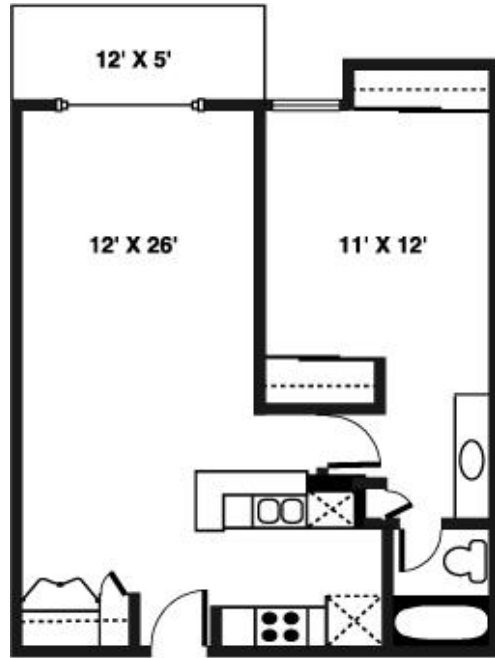
THE FINE PRINT:

- *Daily and monthly rates above require a minimum stay of 31 days. Short term nightly rates require a minimum stay of 3 nights*
- *Rates do not include housekeeping.*
- *One parking space is included with studio and one-bedroom reservations, two spaces with two-bedroom reservations. Additional parking spaces are available for rent at the rate of \$65 / month.*
- *Check-in time is 3:30 PM on the first day of the lease. Check-out time is 12:00 PM on the final day of the lease, which counts as a billable day with Oakwood.*
- *Common areas of the Toluca Hills community are 100% smoke-free.*
- *Oakwood Worldwide reserves the right to adjust rates in select locations in the event of unforeseen market rent increases or utility increases. A thirty (30) day notice of rate change will be provided in the event of such circumstances.*

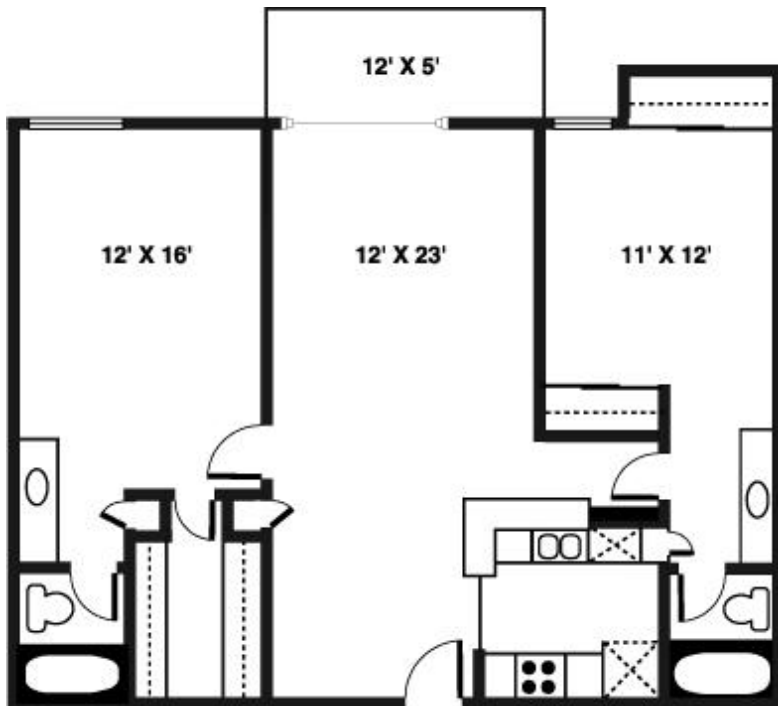




← **Studio**
 406 sq ft
 Queen sized bed
 Full Kitchen minus
 dishwasher



→ **One-Bedroom**
 664-722 sq ft
 Choice of one King-sized
 bed or two twin-sized beds
 Full Kitchen



← **Two-Bedroom**
 988-1020 sq ft
 Choice of one King-sized bed
 or two twin-sized beds
 Full Kitchen